



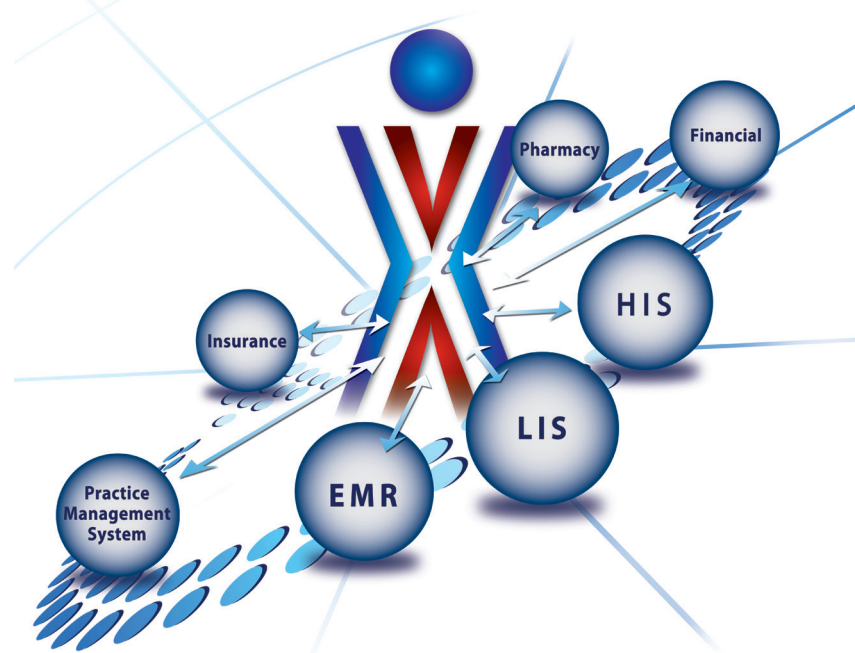
eTX HEMI

HL7 Interface Engine - Making it Simple!

Finally... an HL7 interface engine that reduces the cost and complexity of meeting the demand for healthcare interoperability.

With the eTX HEMI (Healthcare Enterprise Messaging and Integration) Engine, healthcare organizations can handle the changing face of healthcare IT. eTX HEMI simplifies integration initiatives with configuration driven tools and a comprehensive pre-built interface library. Healthcare organizations can now build and deploy HL7 interfaces within hours, not days.

eTX HEMI delivers effortless integration between healthcare systems, be they financial, clinical or administrative. eTX HEMI's support of numerous communication protocols and message formats provides unmatched flexibility in message management, routing, mapping and database access.



“ The simplicity in how eTX HEMI produces an interface is why we selected eTransX. Other options would have taken us weeks or even months to create an interface. Now we're able to respond quickly to our clients' integration needs and create an interface in as little as a few hours. ”

- Jerry Franzella, Chief Information Officer, Calloway Laboratories, Inc.

› Easy to Use

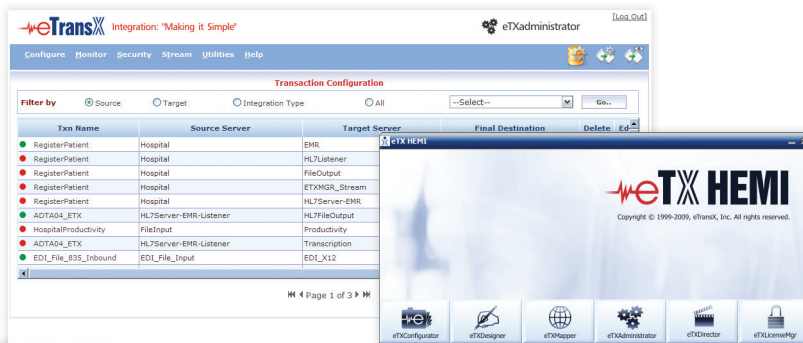
eTX HEMI offers an intuitive user-interface that features our innovative “drag and drop” design, mapping and transformation functionality. The user experience, both at implementation and day-to-day operation, is efficient and effortless.

› Lower Total Cost of Ownership

Because it requires no programming and utilizes a simple drag and drop message creation, eTX HEMI provides lowered total ownership and project costs. Furthermore, our convenient pricing models allow you to select a plan to meet any budget.

› Reliable Support

We are committed to our customers' success by ensuring that our products run smoothly and with minimal disruptions. We provide quick and easy access to our technical support team to address any problems that may arise.



Pricing Models

We offer the most flexible, straightforward pricing in the industry. Unlike our competitors, we don't limit the number of connections you can establish or charge fee's per connection. A simple license fee and support agreement is all you'll need. And, we offer three convenient pricing models to meet your budgetary needs:



Subscription Model:

- Low, affordable monthly payments
- No maintenance charges
- Immediate ROI justification

Technology Leasing:

- Accelerated asset depreciation
- No Capital Expenditure
- Flexible terms
- Discount on upgrade to newer version after terms

Outright Purchase:

- Lower Total Cost of Ownership
- Immediate deployment after terms

Key Features of eTX HEMI

No Programming Required

eTX HEMI offers a configuration-driven total integration platform for comprehensive healthcare integration without writing a single line of code.

Web-Based Monitoring

On board and remote transaction analytics provides robust error monitoring, recovery and transaction monitoring intelligence from anywhere at anytime.

Stable, Secure Platform

eTX HEMI uses the state-of-the-art security features to ensure that transactions are sent securely between disparate systems. It utilizes a multitude of security methods such as encoding, encryption and secure socket layer communication.

Pre-Built Interface Library

Reduce interface build time by 90% or more with our pre-built HL7 interface library for leading HIS, LIS and EMR systems.

Multiple Data Formats

The eTX HEMI interface engine accepts messages in virtually any format from Structured (XML,HL7,EDI) to unstructured data (pdf, jpg, wav).

No VPN Connection

eTX HEMI comes complete with eTX Stream, a client-side integration agent allowing for secure, real-time, HIPAA-compliant HL7 interfaces across the network boundaries with No VPN connections eliminating management and maintenance nightmare associated with VPN connections.